

**DEPARTMENT OF HEALTH & FAMILY WELFARE,
GOVT. OF HIMACHAL PRADESH**



Dated: 15.09.2016

AMENDMENT No. – I

Project Name: Tender for “Construction of Dr. YS Parmar Government Medical College and Hospital at Regional Hospital at NAHAN, District Sirmour, Himachal Pradesh”.

Tender No. : HSCC/DHFW/HOSPITAL/NAHAN/2016, dated: 18.08.2016

1) The Last date of submission & opening of bids has been extended as follows:

(i) Last date to fill/upload the tender : upto 14:30 hrs. on 23.09.2016
through e-Tendering
(Last date of receipt of tender)

(ii) Date of Opening of bids : on 23.09.2016 at 15:00 hrs.

2) Reply to Pre Bid Queries raised by bidders during pre -bid meeting held on 31.08.2016 at HSCC, Head Office, Noida.

SL. NO.	PAGE NO.	CLAUSE, SECTION & VOL NO.	DESCRIPTION	PRE-BID QUERIES	REPLY/ CLARIFICATION OF BIDDERS QUERIES
1		General	Drawing	Request you to earmark the proposed Buildings in the Master plan in order to plan the temporary facilities like batching plant, Labour colony , steel yard etc.,	Master plan attached at Annexure - A and No space for labour colony will be provided. Spaces for batching plant, steel/shuttering yard etc. may be provided depending upon availability. The bidder shall not have any claim whatsoever reason in case the space is not provided. Bidder should visit and examine the site before submitting the bid.
2		General	Area Statement	Request to provide Buildingwise builtup area statement.	Attached at Annexure - B
3		General	Soil Investigation Report	Request to provide soil investigation report.	Refer NIB (Volume-I) Clause No 1.17 Bidders are advised to inspect and examine the site and its surroundings and satisfy themselves before submitting their tenders as to the nature of the ground and sub-soil.
4		General	Space for Site infrastructure	Request to provide space inside site for site infrastructure facilities like batching plan, labour colony, material stock yard, site office etc	Refer Reply Sl. No.-1 and Space for site office shall be provided only.
5		General	Water & Power Supply	Request you to provide one source of water and power supply nearby site at free of cost. Distribution from that source to be contractor's responsibility. Whether borewell is allowed for drawing water for construction. Please confirm it.	Contractor has to make his own arrangement for electricity & water supply.

SL. NO.	PAGE NO.	CLAUSE, SECTION & VOL NO.	DESCRIPTION	PRE-BID QUERIES	REPLY/ CLARIFICATION OF BIDDERS QUERIES
6		General	Drawings	Please earmark the buildings names for the scope of proposed tender. Also request to provide the List of drawing for each building.	Attached at Annexure - B
7		General	Drawings	Please confirm the number of Floors	Three (03) basement, Ground to 6th Floor.
8		General	Drawings	Please confirm the number of Floors	Ground to 9th Floor.
9		General	Drawings	Please confirm which one to follow for Hostel Block + Mess area statement	Refer Arch. Drawings only.
10		General	Drawings	Please provide the Elevation or section drawing for OPD Block & Hostel Block	Hostel Block Drawings Attached at Annexure - C and OPD Block is for Renovation.
11		General	Drawings	Please provide the drawings for Service Block buildings	Attached at Annexure-D .
12		General		Request to provide the Bill of quantities in excel format for cost working.	BOQ already uploaded on website. No separate copy in any other format can be provided.
13		General		Request to provide the break up for all proposed buildings for cost working.	as per tender conditions only.
14	71 of 125	Vol 2 - GCC- Clause 37	Taxes	Any further changes in the existing tax structure shall be claimed extra. Please confirm	Refer: Clause -38 of Vol.-II (GCC).
15	113 of 125	GCC - Schedule F	Mobilization Advance	Request to provide 10% interest free mobilization advance in single installment	No change, Tender conditions shall prevail.
16	17 of 125	Vol 2 - Clause 2	Compensation for Delay	We request to ammend the clause as 1% per Month of delay and maximum up to 5% of CV	No change, Tender conditions shall prevail.
17		Vol01NITANDPQ	SECTION-II INSTRUCTIONS TO BIDDERS (ITB)	We presume that any defects arises during the defects liability period shall only be rectified during DLP Period and any kind of operation and maintenance are not part of the contractor scope of work Please confirm	No Operation work shall be done by the contractor, Only Maintenance works for entire systems are to be carried out by the contractor during DLP.
18		Vol01NITANDPQ	SECTION-II INSTRUCTIONS TO BIDDERS (ITB)	If operation and maintenace to be considered during defects liability period, request you to kindly furnish separate line item for the same.	No Operation work shall be done by the contractor, Only Maintenance works for entire systems are to be carried out by the contractor during DLP.
19		VOL06 Tender Drawing	Vol06tenderdrawingpart6 & 7	Only Electrical lighting layouts are available in the tender documents. Single Line Diagram (SLD) layout is not available in the tender documents. Request you to kindly provide the same.	it is item rate contract. SLD will be provided to successfull bidder

SL. NO.	PAGE NO.	CLAUSE, SECTION & VOL NO.	DESCRIPTION	PRE-BID QUERIES	REPLY/ CLARIFICATION OF BIDDERS QUERIES
20		VOL05BOQ	BOQ OF ELECTRICAL WORKS SUB HEAD 1: HT SUB STATION Page : BOQ-E 1_R1	<p>RMU calls for 2 Nos load break switch and 1 Nos VCB as outgoing.</p> <p>There are two sets of HT distribution panels with 1 incomer and 2 out goings connecting to distribution transformers.</p> <p>If One of the HT distribution panel will be fed from RMU, then feeder provision for the second set of HT distributon panel is not available.</p> <p>Request you to kindly confirm the scheme of power distribution for our understanding.</p>	As per BOQ
21		VOL05BOQ	BOQ OF ELECTRICAL WORKS SUB HEAD 1: HT SUB STATION Page : BOQ-E 4_R1	<p>Request you to kindly confirm whether indoor (OR) outdoor type busduct to be considered for this line item.</p>	partially indoor & partially outdoor. Outdoor portion will be with canopy.
22		VOL05BOQ	BOQ OF ELECTRICAL WORKS SUB HEAD 1: HT SUB STATION Page : BOQ-E 4_R1	<p>Request you to kindly specify the number of bends, end terminations & end flexible joints to be considered for this line item.</p>	As per actual site conditions.
23		VOL05BOQ	BOQ OF ELECTRICAL WORKS SUB HEAD 1: HT SUB STATION Page : BOQ-E 4_R1	<p>Request you to kindly confirm earthed (or) unearthed cable to be considered for this line item.</p>	Earthed system.
24		VOL05BOQ	BOQ OF ELECTRICAL WORKS SUB HEAD 1: HT SUB STATION Page : BOQ-E 6_R1	<p>Please confirm site fabricated cable tray accessories like bends, reducer, Tees, etc. are accepted for perforated trays</p>	As per actual site conditions.
25		VOL05BOQ	BOQ OF ELECTRICAL WORKS SUB HEAD 1: HT SUB STATION Page : BOQ-E 6_R1	<p>Please confirm site fabricated cable tray accessories like bends, reducer, Tees, etc. are accepted for perforated trays</p>	Yes, accepted.
26		VOL05BOQ	BOQ OF ELECTRICAL WORKS SUB HEAD 1: HT SUB STATION Page : BOQ-E 6_R1	<p>If factory made accessories are required for cable trays, please note that only single line item is specified for cable trays, bend , reducers and Tees etc. and the rates of these accessories will vary from each other.</p> <p>Hence request you to provide quantities for vertical bend, horizontal bend, reducer & Tees in separate line items.</p>	As per actual site conditions. Bends reducers etc. can be fabricated on site.

SL. NO.	PAGE NO.	CLAUSE, SECTION & VOL NO.	DESCRIPTION	PRE-BID QUERIES	REPLY/ CLARIFICATION OF BIDDERS QUERIES
27		VOL05BOQ	BOQ OF ELECTRICAL WORKS SUB HEAD 1: HT SUB STATION Page : BOQ-E 6_R1	If factory made accessories are required for cable trays, please note that only single line item is specified for cable trays, bend , reducers and Tees etc. and the rates of these accessories will vary from each other. Hence request you to provide quantities for vertical bend, horizontal bend, reducer & Tees in separate line items.	As per actual site conditions. Bends reducers etc. can be fabricated on site.
28		VOL05BOQ	BOQ OF ELECTRICAL WORKS SUBHEAD 4: RISING MAINS Page : BOQ-E 22_R1	Request you to kindly specify the number of bends, end terminations & end flexible joints to be considered for this line item.	As per actual site conditions. Bends reducers etc. can be fabricated on site.
29		VOL05BOQ	BOQ OF ELECTRICAL WORKS SUBHEAD 4: RISING MAINS Page : BOQ-E 22_R1	Request you to kindly specify the number of bends, end terminations & end flexible joints to be considered for this line item.	As per actual site conditions. Bends reducers etc. can be fabricated on site.
30		VOL05BOQ	BOQ OF ELECTRICAL WORKS SUBHEAD 4: RISING MAINS Page : BOQ-E 22_R1	Request you to kindly specify the number of bends, end terminations & end flexible joints to be considered for this line item.	As per actual site conditions. Bends reducers etc. can be fabricated on site.
31		VOL05BOQ	BOQ OF ELECTRICAL WORKS SUBHEAD 4: RISING MAINS Page : BOQ-E 22_R1	Request you to kindly specify the number of bends, end terminations & end flexible joints to be considered for this line item.	As per actual site conditions. Bends reducers etc. can be fabricated on site.
32		VOL05BOQ	BOQ OF ELECTRICAL WORKS SUB HEAD 8: WIRING Page : BOQ-E 50_R1 SI No 8.01	Request you to kindly confirm the average length to be considered for this line item	As per actual site conditions/ As per tender drawings.

SL. NO.	PAGE NO.	CLAUSE, SECTION & VOL NO.	DESCRIPTION	PRE-BID QUERIES	REPLY/ CLARIFICATION OF BIDDERS QUERIES
33		VOL05BOQ	BOQ OF ELECTRICAL WORKS SUB HEAD 8: WIRING Page : BOQ-E 50_R1 SI No 8.01	Request you to kindly confirm the average length to be considered for this line item	As per actual site conditions/ As per tender drawings.
34		VOL05BOQ	BOQ OF ELECTRICAL WORKS SUB HEAD 8: WIRING Page : BOQ-E 50_R1 SI No 8.02	Request you to kindly confirm the average length to be considered for this line item	As per actual site conditions/ As per tender drawings.
35		VOL05BOQ	BOQ OF ELECTRICAL WORKS SUB HEAD 8: WIRING Page : BOQ-E 50_R1	Request you to kindly specify the thickness of GI box to be used for wiring	Box will be modulerof same make as of switch & sockets.
36		VOL05 BOQ	BOQ OF ELECTRICAL WORKS SUB HEAD 9: LIGHT FIXTURE AND FANS Page : BOQ-E 53_R1 SI No 9.01 i)	Aesthetic view of fixture will vary from model to model Request you to kindly provide the model numbers for this line item from each of the approved makes.	As per BOQ. Equivalent model will be approved at the time of procurement of fittings.
37		VOL05 BOQ	BOQ OF ELECTRICAL WORKS SUB HEAD 9: LIGHT FIXTURE AND FANS Page : BOQ-E 53_R1 SI No 9.01 ii)	Aesthetic view of fixture will vary from model to model Request you to kindly provide the model numbers for this line item from each of the approved makes.	As per BOQ. Equivalent model will be approved at the time of procurement of fittings.
38		VOL05 BOQ	BOQ OF ELECTRICAL WORKS SUB HEAD 9: LIGHT FIXTURE AND FANS Page : BOQ-E 53_R1 SI No 9.01 iii)	Aesthetic view of fixture will vary from model to model Request you to kindly provide the model numbers for this line item from each of the approved makes.	As per BOQ. Equivalent model will be approved at the time of procurement of fittings.
39		VOL05 BOQ	BOQ OF ELECTRICAL WORKS SUB HEAD 9: LIGHT FIXTURE AND FANS Page : BOQ-E 53_R1 SI No 9.01 iv)	Aesthetic view of fixture will vary from model to model Request you to kindly provide the model numbers for this line item from each of the approved makes.	As per BOQ. Equivalent model will be approved at the time of procurement of fittings.
40		VOL05 BOQ	BOQ OF ELECTRICAL WORKS SUB HEAD 9: LIGHT FIXTURE AND FANS Page : BOQ-E 53_R1 SI No 9.01 v)	Aesthetic view of fixture will vary from model to model Request you to kindly provide the model numbers for this line item from each of the approved makes.	As per BOQ. Equivalent model will be approved at the time of procurement of fittings.

SL. NO.	PAGE NO.	CLAUSE, SECTION & VOL NO.	DESCRIPTION	PRE-BID QUERIES	REPLY/ CLARIFICATION OF BIDDERS QUERIES
41		VOL05 BOQ	BOQ OF ELECTRICAL WORKS SUB HEAD 9: LIGHT FIXTURE AND FANS Page : BOQ-E 53_R1 SI No 9.01 vi)	Aesthetic view of fixture will vary from model to model Request you to kindly provide the model numbers for this line item from each of the approved makes.	As per BOQ. Equivalent model will be approved at the time of procurement of fittings.
42		VOL05 BOQ	BOQ OF ELECTRICAL WORKS SUB HEAD 9: LIGHT FIXTURE AND FANS Page : BOQ-E 53_R1 SI No 9.01 viii)	Aesthetic view of fixture will vary from model to model Request you to kindly provide the model numbers for this line item from each of the approved makes.	As per BOQ. Equivalent model will be approved at the time of procurement of fittings.
43		VOL05 BOQ	BOQ OF ELECTRICAL WORKS SUB HEAD 9: LIGHT FIXTURE AND FANS Page : BOQ-E 53_R1 SI No 9.01 ix)	Aesthetic view of fixture will vary from model to model Request you to kindly provide the model numbers for this line item from each of the approved makes.	As per BOQ. Equivalent model will be approved at the time of procurement of fittings.
44		VOL05 BOQ	BOQ OF ELECTRICAL WORKS SUB HEAD 9: LIGHT FIXTURE AND FANS Page : BOQ-E 54_R1 SI No 9.01 x)	Aesthetic view of fixture will vary from model to model Request you to kindly provide the model numbers for this line item from each of the approved makes.	As per BOQ. Equivalent model will be approved at the time of procurement of fittings.
45		VOL05 BOQ	BOQ OF ELECTRICAL WORKS SUB HEAD 9: LIGHT FIXTURE AND FANS Page : BOQ-E 54_R1 SI No 9.01 xi)	Aesthetic view of fixture will vary from model to model Request you to kindly provide the model numbers for this line item from each of the approved makes.	As per BOQ. Equivalent model will be approved at the time of procurement of fittings.
46		VOL05 BOQ	BOQ OF ELECTRICAL WORKS SUB HEAD 9: LIGHT FIXTURE AND FANS Page : BOQ-E 54_R1 SI No 9.01 xii)	Aesthetic view of fixture will vary from model to model Request you to kindly provide the model numbers for this line item from each of the approved makes.	As per BOQ. Equivalent model will be approved at the time of procurement of fittings.
47		VOL05 BOQ	BOQ OF ELECTRICAL WORKS SUB HEAD 9: LIGHT FIXTURE AND FANS Page : BOQ-E 54_R1 SI No 9.01 xiii)	Aesthetic view of fixture will vary from model to model Request you to kindly provide the model numbers for this line item from each of the approved makes.	As per BOQ. Equivalent model will be approved at the time of procurement of fittings.
48		VOL05 BOQ	BOQ OF ELECTRICAL WORKS SUB HEAD 9: LIGHT FIXTURE AND FANS Page : BOQ-E 54_R1 SI No 9.02 i)	Aesthetic view of fixture will vary from model to model Request you to kindly provide the model numbers for this line item from each of the approved makes.	As per BOQ. Equivalent model will be approved at the time of procurement of fittings.
49		VOL05 BOQ	BOQ OF ELECTRICAL WORKS SUB HEAD 9: LIGHT FIXTURE AND FANS Page : BOQ-E 54_R1 SI No 9.02 ii)	Aesthetic view of fixture will vary from model to model Request you to kindly provide the model numbers for this line item from each of the approved makes.	As per BOQ. Equivalent model will be approved at the time of procurement of fittings.
50		VOL05 BOQ	BOQ OF ELECTRICAL WORKS SUB HEAD 9: LIGHT FIXTURE AND FANS Page : BOQ-E 54_R1 SI No 9.02 iii)	Aesthetic view of fixture will vary from model to model Request you to kindly provide the model numbers for this line item from each of the approved makes.	As per BOQ. Equivalent model will be approved at the time of procurement of fittings.

SL. NO.	PAGE NO.	CLAUSE, SECTION & VOL NO.	DESCRIPTION	PRE-BID QUERIES	REPLY/ CLARIFICATION OF BIDDERS QUERIES
51		VOL05 BOQ	BOQ OF ELECTRICAL WORKS SUB HEAD 9: LIGHT FIXTURE AND FANS Page : BOQ-E 54_R1 SI No 9.02 iv)	Aesthetic view of fixture will vary from model to model Request you to kindly provide the model numbers for this line item from each of the approved makes.	As per BOQ. Equivalent model will be approved at the time of procurement of fittings.
52		VOL05 BOQ	BOQ OF ELECTRICAL WORKS SUB HEAD 9: LIGHT FIXTURE AND FANS Page : BOQ-E 54_R1 SI No 9.02 v)	Aesthetic view of fixture will vary from model to model Request you to kindly provide the model numbers for this line item from each of the approved makes.	As per BOQ. Equivalent model will be approved at the time of procurement of fittings.
53		VOL05 BOQ	BOQ OF ELECTRICAL WORKS SUB HEAD 9: LIGHT FIXTURE AND FANS Page : BOQ-E 54_R1 SI No 9.02 vi)	Aesthetic view of fixture will vary from model to model Request you to kindly provide the model numbers for this line item from each of the approved makes.	As per BOQ. Equivalent model will be approved at the time of procurement of fittings.
54		VOL05 BOQ	BOQ OF ELECTRICAL WORKS SUB HEAD 9: LIGHT FIXTURE AND FANS Page : BOQ-E 54_R1 SI No 9.02 vii)	Aesthetic view of fixture will vary from model to model Request you to kindly provide the model numbers for this line item from each of the approved makes.	As per BOQ. Equivalent model will be approved at the time of procurement of fittings.
55		VOL05 BOQ	BOQ OF ELECTRICAL WORKS SUB HEAD 9: LIGHT FIXTURE AND FANS Page : BOQ-E 54_R1 SI No 9.02 viii)	Aesthetic view of fixture will vary from model to model Request you to kindly provide the model numbers for this line item from each of the approved makes.	As per BOQ. Equivalent model will be approved at the time of procurement of fittings.
56		VOL05 BOQ	BOQ OF ELECTRICAL WORKS SUB HEAD 9: LIGHT FIXTURE AND FANS Page : BOQ-E 54_R1 SI No 9.02 ix)	Aesthetic view of fixture will vary from model to model Request you to kindly provide the model numbers for this line item from each of the approved makes.	As per BOQ. Equivalent model will be approved at the time of procurement of fittings.
57		VOL05 BOQ	BOQ OF ELECTRICAL WORKS SUB HEAD 9: LIGHT FIXTURE AND FANS Page : BOQ-E 54_R1 SI No 9.02 x)	Aesthetic view of fixture will vary from model to model Request you to kindly provide the model numbers for this line item from each of the approved makes.	As per BOQ. Equivalent model will be approved at the time of procurement of fittings.
58		VOL05 BOQ	BOQ OF ELECTRICAL WORKS SUB HEAD 9: LIGHT FIXTURE AND FANS Page : BOQ-E 54_R1 SI No 9.02 xi)	Aesthetic view of fixture will vary from model to model Request you to kindly provide the model numbers for this line item from each of the approved makes.	As per BOQ. Equivalent model will be approved at the time of procurement of fittings.
59		VOL05 BOQ	BOQ OF ELECTRICAL WORKS SUB HEAD 9: LIGHT FIXTURE AND FANS Page : BOQ-E 54_R1 SI No 9.03 i)	Aesthetic view and power consumption of fan will vary from model to model Request you to kindly provide the model numbers for this line item from each of the approved makes.	As per BOQ. Equivalent model will be approved at the time of procurement of fittings.
60		VOL05 BOQ	BOQ OF ELECTRICAL WORKS SUB HEAD 9: LIGHT FIXTURE AND FANS Page : BOQ-E 55_R1 SI No 9.03 ii)	Aesthetic view and power consumption of fan will vary from model to model Request you to kindly provide the model numbers for this line item from each of the approved makes.	As per BOQ. Equivalent model will be approved at the time of procurement of fittings.

SL. NO.	PAGE NO.	CLAUSE, SECTION & VOL NO.	DESCRIPTION	PRE-BID QUERIES	REPLY/ CLARIFICATION OF BIDDERS QUERIES
61		VOL05 BOQ	BOQ OF ELECTRICAL WORKS SUB HEAD 9: LIGHT FIXTURE AND FANS Page : BOQ-E 55_R1 SI No 9.03 iii)	Aesthetic view and power consumption of fan will vary from model to model Request you to kindly provide the model numbers for this line item from each of the approved makes.	As per BOQ. Equivalent model will be approved at the time of procurement of fittings.
62		VOL05 BOQ	BOQ OF ELECTRICAL WORKS SUB HEAD 9: LIGHT FIXTURE AND FANS Page : BOQ-E 55_R1 SI No 9.04	Aesthetic view and power consumption of fan will vary from model to model Request you to kindly provide the model numbers for this line item from each of the approved makes.	As per BOQ. Equivalent model will be approved at the time of procurement of fittings.
63		VOL05 BOQ	BOQ OF ELECTRICAL WORKS SUB HEAD 9: LIGHT FIXTURE AND FANS Page : BOQ-E 55_R1 SI No 9.05	Aesthetic view and power consumption of fan will vary from model to model Request you to kindly provide the model numbers for this line item from each of the approved makes.	As per BOQ. Equivalent model will be approved at the time of procurement of fittings.
64		VOL05 BOQ	BOQ OF ELECTRICAL WORKS SUB HEAD 9: LIGHT FIXTURE AND FANS Page : BOQ-E 55_R1 SI No 9.06	Aesthetic view and power consumption of fan will vary from model to model Request you to kindly provide the model numbers for this line item from each of the approved makes.	As per BOQ. Equivalent model will be approved at the time of procurement of fittings.
65		VOL05 BOQ	BOQ OF ELECTRICAL WORKS SUBHEAD 21: OUT DOOR LIGHTING Page : BOQ-E 74_R1 SI No 22.01	Aesthetic view of fixture will vary from model to model Request you to kindly provide the model numbers for this line item from each of the approved makes.	As per BOQ. Equivalent model will be approved at the time of procurement of fittings.
66		VOL05 BOQ	BOQ OF ELECTRICAL WORKS SUBHEAD 21: OUT DOOR LIGHTING Page : BOQ-E 75_R1 SI No 22.02	Aesthetic view of fixture will vary from model to model Request you to kindly provide the model numbers for this line item from each of the approved makes.	As per BOQ. Equivalent model will be approved at the time of procurement of fittings.
67		VOL05 BOQ	BOQ OF ELECTRICAL WORKS SUBHEAD 21: OUT DOOR LIGHTING Page : BOQ-E 75_R1 SI No 22.02	Aesthetic view of fixture will vary from model to model Request you to kindly provide the model numbers for this line item from each of the approved makes.	As per BOQ. Equivalent model will be approved at the time of procurement of fittings.
68		VOL05 BOQ	BOQ OF ELECTRICAL WORKS SUBHEAD 21: OUT DOOR LIGHTING Page : BOQ-E 75_R1 SI No 22.02	Aesthetic view of fixture will vary from model to model Request you to kindly provide the model numbers for this line item from each of the approved makes.	As per BOQ. Equivalent model will be approved at the time of procurement of fittings.
69		VOL04Techspecs	4.0 11 KV TRANSFORMERS Page : SPEC Page E-11 R0	ONAN transformers are manufactured by the approved manufacturers as per IS 1180 according to the latest BIS recommendations Please confirm whether we can consider the same.	it will be IS :1180 ammended uptodate.
70		VOL04Techspecs	LIST OF APPROVED MAKES FOR ELCTRICAL SYSTEM Page : SPEC Page E-160 R0	Request you to kindly cofirm whether we can consider authorized system integrators of Siemens/L&T/ABB/Schneider for HT Panel and RMU	No change. As per Contract/ approved make list
71		VOL04Techspecs	LIST OF APPROVED MAKES FOR ELCTRICAL SYSTEM Page : SPEC Page E-160 R0	Request you to kindly cofirm whether we can consider authorized system integrators of Siemens/L&T/ABB/Schneider for Main LT Panel, APFC Panel and Main AC Panels	No change. As per Contract/ approved make list

SL. NO.	PAGE NO.	CLAUSE, SECTION & VOL NO.	DESCRIPTION	PRE-BID QUERIES	REPLY/ CLARIFICATION OF BIDDERS QUERIES
72		VOL04Techspecs	LIST OF APPROVED MAKES FOR ELECTRICAL SYSTEM Page : SPEC Page E-160 R0	Request you to kindly confirm whether we can consider authorized system integrators of Siemens/L&T/ABB/Schneider for Synchronization Panel/ AMF Panel	No change. As per Contract/ approved make list
73		VOL04Techspecs	LIST OF APPROVED MAKES FOR ELECTRICAL SYSTEM	Approved Makes for Lifts is not available in the tender document Request you to kindly furnish the same.	At the end of electrical specification.
74	Volume -5 BOQ	1.01	Indian water closet	As per the make list Kohler, Roca, American Standards, TOTO, Falcon no one has manufacturing IWC kindly proposed alternate Indian makes	Approved make for IWC are Hindware, Parryware & Cera.
75	Volume -5 BOQ	1.03	China flat back or wall corner type lipped front urinal basin of 430x260x350 mm and 340x410x265 mm sizes with Range of three urinal basin with 10 litre white PVC automatic flushing cistern.	As per the make list Kohler, Roca, American Standards, TOTO, Falcon no one has manufacturing Lipped urinal kindly proposed alternate Indian makes	PHE BOQ Item no. 1.03 description has been Amended & Shall be read as follows: "Providing & fixing of Vitreous China Urinal of Size 500x295x720 mm. back inlet including fitting, for Urinal complete as required".
76	Volume -5 BOQ	3.04	Internal Work- Exposed on walls	Kindly provide us the GI pipe grade heavy or Medium	As per CPWD Specifications.
77	Volume -5 BOQ	3.33	Water cooler	Kindly provide us the approved makes	As per CPWD Specifications.
78	Volume -5 BOQ	8	Borewell	Kindly proposed any local borewell contracts name	As per Tender Condition.
79	Volume -5 BOQ	12 i)	ETP	Kindly provide us the scope clarity for ETP civil works	Work shall be carried out as per BOQ Items & Tech. Specifications.
80	Volume -5 BOQ	12 ii)	STP	Kindly provide us the scope clarity for STP civil works	Work shall be carried out as per BOQ Items & Tech. Specifications.
81		Vol03SCC	C /4.0	Since this is a competitive bid and List of approved makes has been provided as part of NIT documents, to ensure fair bidding, the contractor shall have the liberty to choose from any of the approved makes listed subject to compliance to specifications . Please confirm. And thereby request you to delete the clause "However, final choice of make shall lie with the Engineer".	Shall be as per tender condition.
82		Vol03SCC	C /11.0	Samples shall be submitted for the HVAC visible items inside the Conditioned Space like Grilles & Diffusers & Valves only. Please Confirm.	Shall be as per tender condition.
83		Vol03SCC	C /12.0	Testing shall be done once prior to the commissioning. Please Confirm.	Shall be as per tender condition.

SL. NO.	PAGE NO.	CLAUSE, SECTION & VOL NO.	DESCRIPTION	PRE-BID QUERIES	REPLY/ CLARIFICATION OF BIDDERS QUERIES
84		Vol03SCC	C /13.2	Testing shall be done once prior to the commissioning. Please Confirm.	Shall be as per tender condition.
85		VOL05BOQ	4.0/[4.1.1 to 4.1.4] & [4.2.1 to 4.2.2]	Please confirm the following points: > Length of wiring in Rmt. > TR of all the AHUs.	Wiring shall be as per tender. CFM of AHU & Configuration given.
86		VOL05BOQ	33.0	We presume the Control Console /Desk to be a Chiller Plant Manager. Please Confirm. Also, please confirm on the length of wiring , Cables etc.....	Control Console Desk shall be as per tender.
87		VOL04Techspecs	Specs - AC-Page -37	Please confirm the thickness of Insulation.	Thickness of Insulation = 25 MM.
88		VOL05BOQ	B/10.0	Pipe Insulation Shall be as per the Technical Specifications (Expanded polystyrene) or BOQ (Nitrile Rubber). Please Confirm.	As per BOQ.
89		VOL04Techspecs	Specs - AC-Page -87		As per BOQ.
90		S.No.1.39 of Fire Fighting System of Volume-V -BOQ of Page No.FF 9 of 17	Fire Trace System - LT Panel	Kindly provide us the LT Panel Dimension (Length x Width x Height) for designing Fire trace System protection.	Dimensions differs from manufacturer to manufactufre. Approved manufacturer may be contacted
91		S.No.1.40 of Fire Fighting System of Volume-V -BOQ of Page No.FF 9 of 17	Fire Trace System - HT Panel	Kindly provide us the HT Panel Dimension (Length x Width x Height) for designing Fire trace System protection.	Dimensions differs from manufacturer to manufactufre. Approved manufacturer may be contacted
92		S.No.4 of Page No.84 of List of approved makes- Fire Fighting Works	Portable Fire Extinguisher	Kindly include "Safeguard , Superex & Getech " makes also in the list of approved makes.	As per Tender Condition.

SL. NO.	PAGE NO.	CLAUSE, SECTION & VOL NO.	DESCRIPTION	PRE-BID QUERIES	REPLY/ CLARIFICATION OF BIDDERS QUERIES
93		S.No.5 of Page No.84 of List of approved makes- Fire Fighting Works	First aid Fire hose reels	Kindly include "Safeguard , Superex & Getech " makes also in the list of approved makes.	As per Tender Condition.
94		S.No.6 of Page No.84 of List of approved makes- Fire Fighting Works	Fire hose pipes	Kindly include "Safeguard , Superex & Getech " makes also in the list of approved makes.	As per Tender Condition.
95		S.No.11 of Page No.84 of List of approved makes- Fire Fighting Works	Rubber hose 12/20mm dia	Kindly include "Newage ,Safeguard , Superex" makes also in the list of approved makes.	As per Tender Condition.
96		S.No.12 of Page No.84 of List of approved makes- Fire Fighting Works	Reinforced rubber lined/canvas	Kindly include "Safeguard & Superex " makes also in the list of approved makes.	As per Tender Condition.
97		S.No.24 of Page No.84 of List of approved makes- Fire Fighting Works	Yard Hydrant Stand Post,4 way suction	Kindly include "Safeguard , Superex & Getech " makes also in the list of approved makes.	As per Tender Condition.
98		S.No.60 of SPEC Page E-164 R0 of List of approved makes for Electrical System	EPABX system	Kindly include "Tadiran & NEC " makes also in the list of approved makes.	As per Tender Condition.
100			Proforma of Schedule, Cl.10 CA and 10CC, GCC Page No.113	We request you to kindly make provision of Clause 10CA and 10CC as the completion schedule of the project is 27 months (As per CPWD norms). - Please confirm.	No change, Tender conditions shall prevail.
101			Proforma of Schedule, Milestone, GCC Page No.112	As the total completion schedule of the project is 27 months Please fix mile stone of completion of RCC work as 18 months instead of 12 months.	No change, Tender conditions shall prevail.
102			Proforma of Schedule, Cl.7, GCC Page No.113	We request you to exempt this ceiling for first three RA Bills and last two RA Bills.	No change, Tender conditions shall prevail.
103			ITB-2 Page No 18 and SCC, (Cl. 4 (iv), Page No.6	Please keep only construction related approvals in the scope of contractor and other statutory approvals i/c tree cutting, Environmental clearance etc. in client scope. - Kindly confirm.	Refer SCC (Vol.-III) Clause No 4 "Scope of Work".

SL. NO.	PAGE NO.	CLAUSE, SECTION & VOL NO.	DESCRIPTION	PRE-BID QUERIES	REPLY/ CLARIFICATION OF BIDDERS QUERIES
104			ITB, Clause No 2.3.7, Page No.21-22	We understand that our quote rate shall be excluding Service tax, and the same shall be reimbursable to us on actual basis. Further, any new taxes/levies or variation in the existing taxes, including GST imposed by statute, during currency of contract, the same shall be adjusted on actual basis. Please confirm.	Shall be as per tender conditions. Refer Vol.II (GCC) clause No 38.
105			SCC, Cl. 5d, Page No.7	We understand that this is an item rate tender, hence all detailed construction drawings shall be provided by client/consultant to contractor. Only shop drawing in the scope to contractor. Please clarify, whether design of structure is in the scope of contractor or client?	As per Tender Condition.
106			SCC, Page No.44, Cl.(40 p(ix)	We request to pay the idling charges which will not attributable to contractor. Kindly confirm.	Shall be dealt as per tender conditions.
107			SCC, Cl.42.2.5	Please provide us detail of Site office including area and other facility details, vehicles & monthly average running in KM etc. so that we can consider the same in our working.	Site office Area approximate 120 Sqm. and othre facility as per site and work requirement.
108			SCC, Cl.40 P (xii)	We request you to make some provision of coordination charges on mutually agreed terms and also specify the type of treatment.	Shall be dealt as per tender conditions.
109			Payment Break-up	Kindly make provision of stage payment on supply, installation and commissioning on all MEP Services as per CPWD works manual/ Specifications. Please confirm.	Shall be dealt as per tender conditions.
110			Operation & Maintenance during DLP	We understand that all consumables like fuel, spare part etc. will be provided by the owner, during the DLP.	No change, Tender conditions shall prevail.
111			BOQ Earth work item	No item is available in the BOQ for disposal. Kindly clarify.	Shall be dealt as per requirment & terms of tender conditions.
112			Cl.5, Technical Specs., Page No.9	Please provide us minimum 4-5 approve make of each items.	No change, Tender conditions shall prevail.
113			Drawing	Kindly provide Schematic/ Riser drawings for HVAC, Water supply, Fire fighting, FA & ELV systems	In the scope of contractor.
114			Data Sheet	Kindly provide Data sheets for major MEP Equipment	Technical Specification already provided with tender.
115			FFS / DG	Kindly clarify whether you want to test all the Pumps/ DG.	As per BOQ Item and Tech. Specifications.

SL. NO.	PAGE NO.	CLAUSE, SECTION & VOL NO.	DESCRIPTION	PRE-BID QUERIES	REPLY/ CLARIFICATION OF BIDDERS QUERIES
116			HVAC BMS	We understand that there is no scope for HVAC BMS Control System in this project. Kindly confirm.	Yes
117			Approved Make list	Please approve M/s. LG & M/s. Voltas in Approved make list for VRF & Dx Split Equipment's.	Shall be as per tender.
118				Refer tender page no. 16 (Vol-1) para 1.25 and 1.26 : List of specialized services has been specified in clause no. 1.25, and in clause no. 1.26, it is specified that being a composite tender, the bidder must associate with himself agencies otherwise including specialized services for which an affidavit/ undertaking as per format enclosed at form 'H' should be submitted along with the technical bid. It is suggested that the same procedure may be considered for lowest bidder before acceptance of work. At this stage in a short time this criteria could not be fulfilled by all the bidders. However the specialized services will be executed by specialized agencies only.	No change, Tender conditions shall prevail.
119				Refer performa of schedule page no. 113 of 125 : it is specified that cl. 10 (ii) and 10B (iii) i.e. mobilization advance and cl. No. 10C, 10CA and 10CC are not applicable for this project. It is suggested that in all other department such as MES, CPWD, NBCC, DDA, etc. these clause are applicable, be considered and amend the tender accordingly.	No change, Tender conditions shall prevail.
120				Refer tender page no. 156 (VII-I) clause no. 1.27 Registration/ Licence : It is specified that the firm should have his firm registered for Himachal Pradesh VAT, PF, ESIC, Building cess registration with the appropriate authorities in case the firm is not registered at the time of submission of bid, they will submit an undertaking that they will get themselves registered with the concerned authorities in case they are awarded the work. It has been come to your notice that PF and ESIC is comes under central registration, only Himachal Pradesh VAT undertaking will be submitted.	No change, Tender conditions shall prevail.
121				The client of project is department of health & family welfare, Govt. of Himachal Pradesh through special Secretary (Health) and executing authority is HSCC (I) Ltd. It is clarified that the requisite funds are allotted against the project or not.	It is clarified only to the successful bidders.
122				Request for average annual turnover of three years should be amended to 50% instead of 100% .	No change, Tender conditions shall prevail.
123				The year's for calculating average annual financial turnover for financial eligibility should be immediate last 3 consecutive financial years i.e. year's ending 31.03.2016 (2015-16, 2014-15 & 2013-14) . Request for the condition of year ending 31.03.2015 shall be revised to 31.03.2016.	No change, Tender conditions shall prevail.

SL. NO.	PAGE NO.	CLAUSE, SECTION & VOL NO.	DESCRIPTION	PRE-BID QUERIES	REPLY/ CLARIFICATION OF BIDDERS QUERIES
124				<p>Refer the List of Approved Makes : Civil work, provided in Vol-IV Tech. specs, particularly for steel and cement. The make mentioned for both are not sufficient and not as per the guidelines of CPWD manual.</p> <p>For Cement : As per the CPWD manual 2014, the reputed manufacturers such as J.K., Shree Cement, Ambuja, Birla or any cement manufacturer having production capacity not less than one million tones per annum shall be allowed for usage. Wherein out NIT has only ACC & Ultratech cement mentioned. Your kind intention is invited to the fact that the work is of very urgent nature, on hilly terrain and of huge quantum, so mere option of 2 cement makes is not sufficient. Moreover the supply management of ACC in that region is not adequate, so in the light of above facts all major cement supplier shall also be included.</p>	No change, Tender conditions shall prevail.
125				<p>For Steel : As per the CPWD manual 2014, the steel procurement shall only be restricted to only primary steel producers which constitutes the producers like SAIL, TATA, RINL, JSW steel Ltd and Jindal Steel & Power Ltd. As per the NIT only SAIL, RINL, Tisco are approved/ mentioned, JSW steel Ltd. and Jindal Steel & Power Ltd which are also Primary steel producers as per the guidelines of Govt. of India (Ministry of Steel) are left/mission. So you are requested to kindly provide the addition in list of approve makes.</p>	No change, Tender conditions shall prevail.
126				<p>As per the NIT, the Earnest Money should be submitted in shape of Pay order or Bank Guarantee (BG) in favour of HSCC (India) Ltd., You are requested to kindly allow the submission of FDR for same purpose under same terms & conditions as allowed by CPWD and all major deptts.</p>	No change, Tender conditions shall prevail.
127				<p>As mentioned, the Performance Guarantee (PG) is required to be submitted upto defect liability period (DLP) plus 6 months i.e. 18 months in addition to the agreement time of completion. But as per CPWD and other major deptts., the validity of PG should only be valid upto completion period. For DLP, the security deducted in our RA bills are kept as security and released after completion of DLP or if you are asking for PG upto DLP then, then o security amount should be deducted from our RA bills. Kindly provided the amendment accordingly.</p>	No change, Tender conditions shall prevail.
128				<p>Kindly clarify, if site of construction is available & free from all hindrances like trees, electric poles, services etc.</p>	Refer Clause No 1.17 of Vol.-I (NIT/PQ) of the tender document.

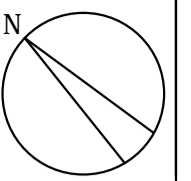
3) It is further clarified that No Operation works shall be done by the contractor and only Maintenance Works of entire systems shall be done by the contractor during DLP.

4) The Validity of Bid Security/ EMD in the form of Bank Guarantee (BG) will be considered from the original due date of bid submission i.e. 16.09.2016.

Please note that this amendment no. – I, shall form part of the tender and all others terms & conditions of the tender shall remain unchanged.

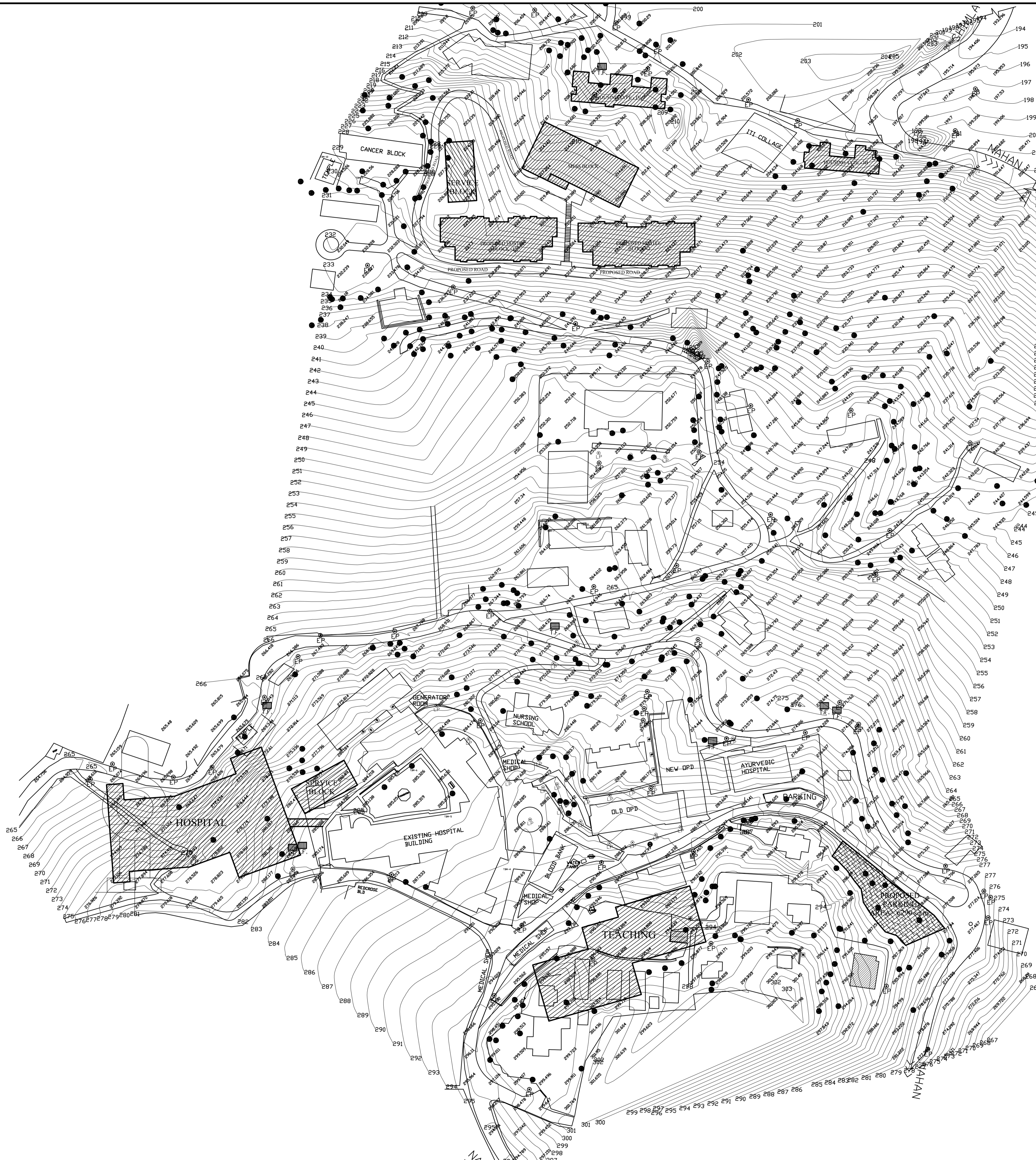
Prospective bidders are advised to regularly scan through HSCC e-tender portal <http://www.tenderwizard.com/HSCC> as corrigendum/amendments etc., if any, will be notified on this portal only and separate advertisement will not be made for this.

(-sd-)
Chief General Manager (PG-II),
HSCC (India) Ltd
For & on Behalf of Department of Health & Family Welfare,
Govt. of Himachal Pradesh through Special Secretary (Health)



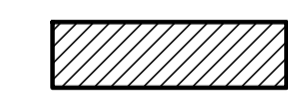

This drawing with all its contents is the sole intellectual property of the Hospital Services Consultancy Corporation (India) Ltd. Copying of this drawing or part thereof or its use in any form whatsoever without the written permission of HSCC is prohibited.

ANNEXURE - A



PARKING CALCULATION

Total Built Up Area = 49148.60 sq.m.
 As Per TNCP (H.P.), Parking = @ 0.50 to 1.50 ECS per 100 sq.m. of floor area.
 Parking Area Required = 49148.60 / 100 sq.m.
 = 491.5 sq.m.
 = 491.5 x 0.5 sq.m. (@ 0.50ecs/100sq.m.)
 = 245.75 sq.m.
 1 ECS = 25 sq.m. for Open Parking
 = 245.75 x 25 sq.m.
 Parking Required = 6143.75 sq.m.
 Parking Provided = 6290 sq.m.

-  PROPOSED NEW CONSTRUCTION
-  PROPOSED PARKING

NO.	DATE	ISSUED
PRINTS ISSUED		
REV.	DATE	DESCRIPTION
REVISION		

PROJECT
 DR. Y.S. PARMAR
 GOVT. MEDICAL
 COLLEGE, NAHAN
 DISTT., SIRMOUR (H.P.)

TITLE
 TENDER
 DRAWING

SITE PLAN

OWNER SIGN

ARCHITECT SIGN

HSCC/NAHAN/DT/SITE PLAN/01

DRAWING NO.	R-0
HSCC/115	REV.

JOB NO.	SCALE	DATE
HSCC/115	1:500	05/09/2016

App by Rev. by Prep. by

HOSPITAL SERVICES CONSULTANCY CORPORATION (INDIA) LIMITED (A GOVERNMENT OF INDIA ENTERPRISE)

HSCC

ANNEXURE -B

S.No.	Description	
SITE PLAN		
1	SITE PLAN	
HOSPITAL BLOCK		
		AREA (SQ.M.)
1	-3 LEVEL FLOOR PLAN	1174.35
2	-2 LEVEL FLOOR PLAN	833.17
3	-1 LEVEL FLOOR PLAN	523.21
4	GROUND FLOOR PLAN	2932.28
5	FIRST FLOOR PLAN	2658.86
6	SECOND FLOOR PLAN	2148.16
7	THIRD FLOOR PLAN	2148.16
8	FOURTH FLOOR PLAN	2148.16
9	FIFTH FLOOR PLAN	2148.16
10	SIXH FLOOR PLAN	2148.16
11	TERRACE FLOOR PLAN	299.92
12	ELEVATION, SECTION	
	TOTAL	19162.59
TEACHING BLOCK		
1	GROUND FLOOR PLAN	987.09
2	FIRST FLOOR PLAN	1750.91
3	SECOND FLOOR PLAN	1721.66
4	THIRD FLOOR PLAN	1721.66
5	FOURTH FLOOR PLAN	1750.91
6	FIFTH FLOOR PLAN	1750.91
7	SIXH FLOOR PLAN	1721.66
8	SEVENTH FLOOR PLAN	1721.66
9	EIGHTH FLOOR PLAN	1721.66
10	NINTH FLOOR PLAN	1721.66
11	TERRACE FLOOR PLAN	
12	ELEVATION, SECTION	
	TOTAL	16569.78
HOUSING TYPE-III		
1	GROUND FLOOR	233.91
2	FIRST FLOOR	217.69
3	SECOND FLOOR	217.69
4	THIRD FLOOR	217.69
5	FOURTH FLOOR	217.69
6	FIFTH FLOOR	217.69
7	ELEVATIONS, SECTIONS	
	TOTAL	1322.36
HOUSING TYPE-IV		
	GROUND FLOOR	407.696
	FIRST FLOOR	386.095
	SECOND FLOOR	386.095
	THIRD FLOOR	386.095
	FOURTH FLOOR	386.095
	FIFTH FLOOR	386.095
	TERRACE & ROOF PLAN	
	ELEVATION, SECTIONS	
	TOTAL	2338.171

HOSTEL - BOYS		
	GROUND FLOOR	632.5
	FIRST FLOOR	558.9
	SECOND FLOOR	558.9
	THIRD FLOOR	558.9
	FOURTH FLOOR	558.9
	FIFTH FLOOR	558.9
	-1 FLOOR	392.8
	-2 FLOOR	388.1
	TERRACE, ELEVATION, SECTION	
	TOTAL	4207.9
HOSTEL - GIRLS		
	GROUND FLOOR	632.5
	FIRST FLOOR	558.9
	SECOND FLOOR	558.9
	THIRD FLOOR	558.9
	FOURTH FLOOR	558.9
	FIFTH FLOOR	558.9
	SIXTH FLOOR	558.9
	-1 FLOOR	392.8
	-2 FLOOR	388.1
	TERRACE, ELEVATION, SECTION	
	TOTAL	4766.8
SERVICE BLOCK (2 BLOCKS)		
	GROUND FLOOR	266.56
	ELEVATION, SECTION	
	TOTAL	266.56 X2 = 533.12
MESS		
	GROUND FLOOR	773.64
	ELEVATION, SECTION	
	TOTAL	773.64
	TOTAL BUILT UP AREAL	49674.36 sq.m.
RENOVATIONS		
1	EXISTING HOSPITAL BLOCK	2264
2	EXISTING RED CROSS BUILDING	2894
2	EXISTING OPD BLOKS	548
	TOTAL	5706